

TECH PREP CONSORTIUM STRUCTURE GUIDELINES

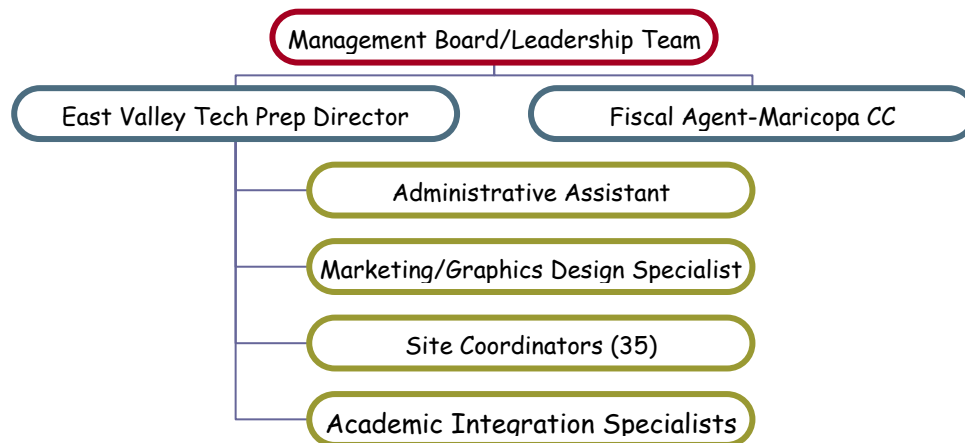
FY09

1.1 Organization of the Consortium

East Valley Tech Prep Consortium membership includes 8 public school districts, one charter school, one joint technical education district and 5 post-secondary institutions. The secondary schools are located in Maricopa County. The schools serve both urban and rural communities in over 900 square miles. The districts include both unified and union and vary in size and numbers. The smaller districts; Fountain Hills, Queen Creek, and Higley; have one high school, whereas the largest districts, Mesa Public Schools and Tempe Union High School District, have 6 high schools in each of the districts. The East Valley Institute of Technology (EVIT) , a vocational/technical school works with EVTPC participating districts, offering satellite CTE courses as well as having their own EVIT facility and classes. The secondary districts served over 250,000 students.

The Consortium's five community colleges are all part of the Maricopa Community College District, which is the nation's largest multi-college system. The District offers approximately 6,000 courses in approximately 300 occupational programs. The Maricopa Community Colleges exceed 200,000 head count each semester.

Organization of the Consortium is as illustrated below:



1.2 Governance Structure

TECH PREP LEADERSHIP TEAM

Name of Consortium East Valley Consortium

<u>Secondary Consortium School Districts</u>	<u>Representative</u>
1. Chandler Unified School District	Meg Giancesello
2. Desert Hills Charter School	Fawn Eaton
3. East Valley Institute of Technology	Janet Cox
4. Fountain Hills Unified District	Beth Smith
5. Gilbert Public Schools	Mark Hamilton
6. Higley Unified School District	Marlo Loria
7. Mesa Public Schools	Lisa Doll (Co-Chair)
8. Queen Creek Unified School District	Kerry Budinger
9. Scottsdale Unified School District	Mitch Simmons (Chair)
10. Tempe Union High School District	Nori Cannell

Postsecondary Consortium Schools

1. Chandler-Gilbert Community College	William Crawford
2. Gateway Community College	Kathy Kunath
3. Mesa Community College	Jo Wilson
4. Scottsdale Community College	vacant
5. South Mountain Community College	Cindy Odgers

Business and Community Members

1. Dr. Yvette Marrin, President	National Cristina Foundation, Inc.
2. Jim Bosshart, Coordinator	AZ Partnership for Construction Careers
3. Gabriel Santoyo, Sr. Recruiter	Pulte Homes

EXECUTIVE COMMITTEE

Director	Rose See
Chair	Mitch Simmons
Co-Chair	Lisa Doll
Secretary	Valerie Hill
Treasurer (Fiscal Agent)	Jo Wilson (Mesa CC)
Secondary Representative	Lisa Doll
Postsecondary Representative	William Crawford (Chandler-Gilbert CC)
Business/Community	Gabriel Santoyo

Other EVTPC Support Staff (Temporary Employees)

Cari Hall	Marketing/Web Support
TBD (vacant)	EVTPC Outreach Specialist
Amanda Schneider	Math Integration Specialist
Kim St. Clair	Reading Integration Specialist

TECH PREP SITE COORDINATORS

Name of Consortium East Valley

Consortium School
Secondary – District

<u>Name</u>	<u>Name of School</u>	<u>Program Area</u>
1. MaryAnn Rezzonico	Basha HS	Marketing/Business
2. Heather Berlin	Perry HS	FACS
3. Matt Lewis	Chandler HS	Ag
4. Charlotte Rock	Hamilton HS	FACS
5. Brian Kennedy	EVIT	Law, Pub. Safety & Security
6. Eric Periz	EVIT	Graphic Communication
7. Jennifer Horen	Fountain Hills HS	Education Professions
8. Chris Askew	Highland HS	Industrial Tech
9. Jane DiMauro	Desert Ridge HS	Career Center/Counseling
10. Joan Henry	Desert Ridge HS	FACS
11. Nancy Jones	Mesquite HS	Business
12. Curtis Willems	Highland HS	Ag
13. Cynthia Coor	Higley HS	Graphic Communication
14. Cynnamon Baca	Skyline HS	Counselor
15. Lavon Campos	Westwood HS	FACS
16. Ray Gless	Red Mt. HS	Ag
17. Ken Jaycox	Mesa HS	Industrial Tech
18. Jerry Richardson	Mountain View HS	Business
19. Kathy Wooton	Skyline HS	Business/Info Technology
20. Amanda Schneider	Queen Creek HS	Marketing
21. Angela Chicci	Queen Creek HS	Counseling
22. Adalyn Tessler	Coronado HS	Business/Info Technology/Marketing
23. Pam Wilgus	Coronado HS	FACS
24. Lisa Berkley	Marcos de Niza	FACS
25. Julie Box	Tempe District	Business
26. Shauna Demers	Mountain Point HS	Business
27. Heather Glaeser	McClintock	FAC
28. Amie Hickel	Desert Vista HS	Counselor
29. Dabney Leinberger	Corona del Sol	Business
30. Deanna Smith	Tempe HS	FACS

Postsecondary

<u>Name</u>	<u>Institution</u>	<u>Program Area</u>
1. Anthony Braaten	Chandler-Gilbert CC	Dual Enrollment Coordinator
2. Linda Jensen	Gateway CC	Dual Enrollment Coordinator
3. TBD	Mesa CC	TBD
4. Paul Langworthy	Scottsdale CC	Dual Enrollment Coordinator
5. TBD	South Mountain CC	TBD

1.3 Leadership Team Meetings

2008-2009 East Valley Tech Prep Meeting Calendar

Date	Time	Event	Location
2008			
Wed, Aug 27	3:30-5:00pm	East Valley Site Coordinator Meeting	Mesa Comm College
Thurs, Aug 28	1pm-3pm	East Valley Management Board Meeting	Mesa Comm College
Wed, Nov 12	3:30-5:00pm	East Valley Site Coordinator Meeting	Gateway Comm College
Thurs, Nov 13	1pm-4pm	East Valley Management Board Meeting	Mesa Comm College
2009			
Wed, Feb 11	3:30-5:30pm	Site Coordinator Meeting/Recruiting Non-Trad Students	Mesa Comm College
Thurs, Feb 12	1pm-4pm	East Valley Management Board Meeting	Mesa Comm College
Wed, April 8	3:30-5pm	East Valley Site Coordinator Meeting	South Mt. Comm College
Thurs, Apr 23	1pm-4pm	East Valley Management Board Meeting	Mesa Comm College
Wed, May 6	1-3pm	East Valley Management Board Meeting	Mesa Comm College
	3:30-5pm	Site Coordinator Meeting	

1.4 Director Time Allocation

